

Wanda L. Rizer
Art Director/Senior Graphic Designer

Unique Qualifications

Twenty-three years of graphic design, art direction, and project management experience. Start-to-finish skills include conceptual design, layout and typography, illustration, digital color correction, and final file preparation for printing. Knowledge and training in traditional photography and studio lighting techniques complement digital photography skills. Considered Master (National) Level¹ in area of expertise.

Extensive experience producing numerous security, building design guidance, mitigation, and related promotional materials in support of Federal, State, and local governments, private sector, and non-profit organizations. Project portfolio examples include publication, presentation, large format display, illustration, and outreach material examples.

Publications



DHS Science and Technology Directorate, Infrastructure and Geophysical Division, Building and Infrastructure Protection Series— *Aging Infrastructure: Issues, Research, and Technology*, 2010; *Reference Manual to Mitigate Potential Attacks Against Buildings*, 2010 (currently in production); *Primer to Design Safe School Projects in Case of Terrorist Attacks and School Shootings*, 2010 (currently in production); *Design Guide for Improving School Safety in Earthquakes, Floods, and High Winds Building*, 2010 (currently in production); *Building Design for Homeland Security*, 2010 (currently in production).

FEMA Mitigation Assessment Team Building Performance Design and Guidance— FIA-22: *Hurricane Andrew in Florida*, 1993; FIA-23: *Hurricane Iniki in Hawaii*, 1993; FEMA 277: *The Oklahoma City Bombing*, 1996; FEMA 281: *Hurricane Opal in Florida*, 1996; FEMA 290: *Hurricane Fran in North Carolina*, 1997; FEMA 342: *Midwest Tornadoes of May 3, 1999*, 1999;



design4impact.com

WANDA RIZER

Art Director/Graphic Designer

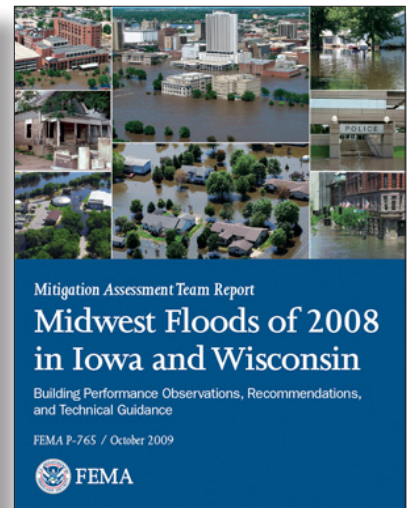
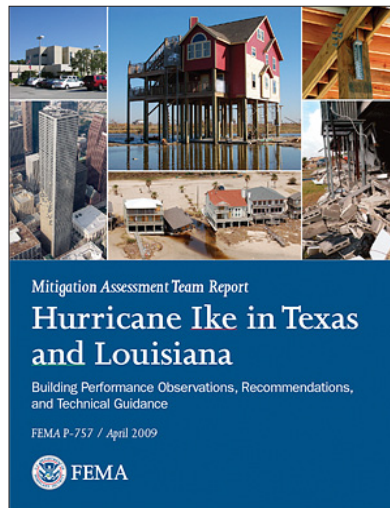
45 Hamilton Drive
Abbottstown, Pennsylvania 17301

p. 410-409-1853
f. 717-259-5858

rizer@design4impact.com

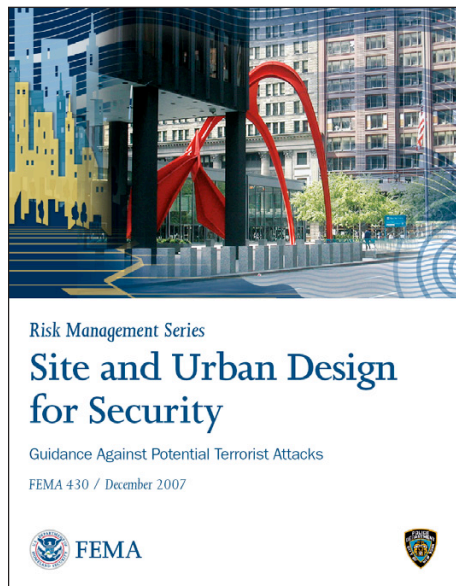
¹ Designation as defined by current Federal Technical Assistance and Research Contract procurement specifications: Professional shall possess either a professional registration and a minimum of fifteen (15) years experience in their field of expertise or be considered an expert in their field of experience and over 20 years of experience in their field of expertise.

FEMA 403: *World Trade Center Building Performance Study*, 2002; FEMA 488: *Hurricane Charley in Florida*, 2005; FEMA 489: *Hurricane Ivan in Alabama and Mississippi*, 2005; FEMA 548: *Summary Report on Building Performance, Hurricane Katrina in the Gulf Coast*, 2006; FEMA 549: *Hurricane Katrina in the Gulf Coast*, 2006; FEMA P-757: *Hurricane Ike in Texas and Louisiana*, 2009; FEMA P-765: *Midwest Floods of Iowa and Wisconsin*, 2009.



FEMA National Earthquake Hazards Reduction Program (NEHRP)— FEMA 474: *Promoting Seismic Safety*, 2005

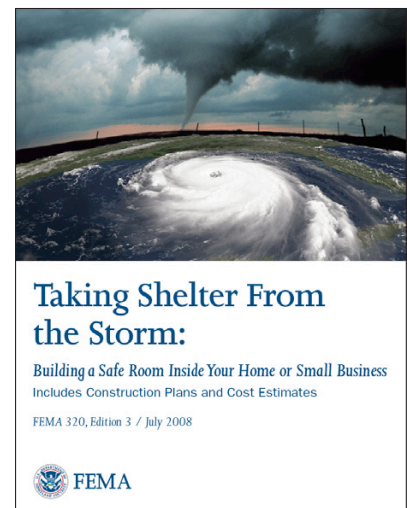
FEMA HAZUS Program— FEMA 366: *HAZUS-MH Estimated Annualized Earthquake Losses for the United States*

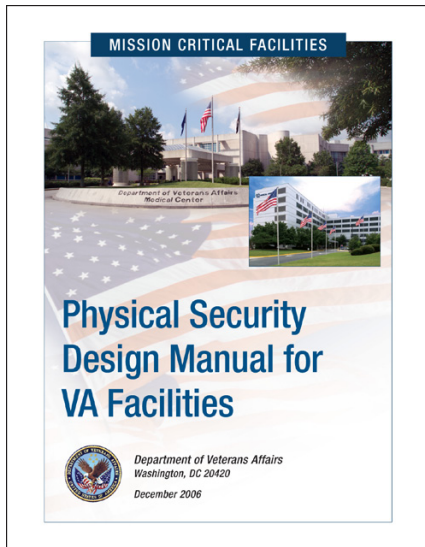


FEMA Risk Assessment and Risk Management Series— FEMA 426: *Reference Manual to Mitigate Potential Attacks Against Buildings*, 2003; FEMA 428: *Primer to Design Safe School Projects in Case of Terrorists Attacks*, 2003; FEMA 424: *Design Guide for Improving School Safety in Earthquakes, Floods, and High Winds*, 2004; FEMA E-155: *Building Design for Homeland Security*, 2004; FEMA 433: *Using HAZUS-MH for Risk Assessment*, 2005; FEMA 453: *Design Guidance for Multi-Hazard Shelters*, 2006; FEMA 543: *Design Guide for Improving Critical Facility Safety from Floods and High Winds*, 2006, FEMA 430: *Site and Urban Design for Security, Guidance Against Potential Terrorist Attacks*, 2007.

FEMA Construction Design and Guidance— FEMA 312: *Homeowner's Guide to Retrofitting*, 1998; FEMA 320: *Taking Shelter From the Storm: Building a Safe Room Inside Your House*, 1999, revised 2004; FEMA 347: *Above the*

Flood: Elevating Your Floodprone House, 2000; FEMA 55: *Coastal Construction Manual*, Third Edition, 2000; FEMA 431: *Tornado Protection: Selecting Refuge Areas in Buildings*, 2003; FEMA 499: *Home Builder's Guide to Coastal Construction*, 2005, FEMA 550: *Recommended Residential Construction for the Gulf Coast: Building on Strong and Safe Foundations*, 2006; FEMA 320: *Taking Shelter From the Storm: Building a Safe Room Inside Your Home or Small Business*, 2008.



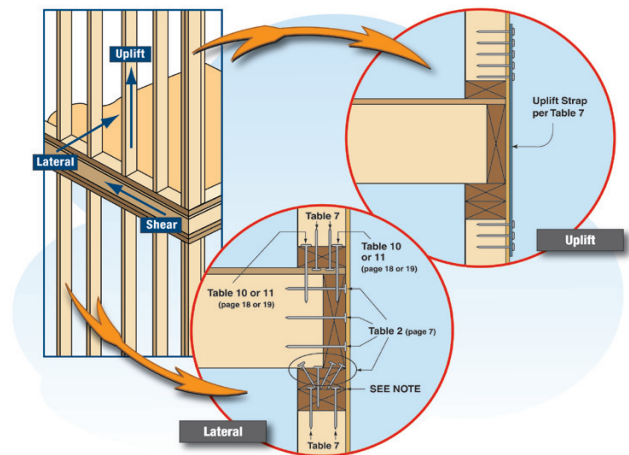


National Institute of Building Science / Department of Veterans Affairs Physical Security Design— *Mission Critical Facilities: Physical Security Design Manual for VA Facilities*, December 2006; *Life-Safety Protected: Physical Security Design Manual for VA Facilities*, December 2006; *VA Physical Security Standards: Cost Estimates for Physical Security Standards*, December 2006.

American Forest & Paper Association (AF&PA) Wood Construction Design and Guidance— *Wood Frame Construction Manuals (WFCM) Guide To Wood Construction In High Wind Areas For One- And Two-Family Dwellings* for 90, 100, 110, 120, and 130 Exposure B recommendation manuals, 2006; *Guide To Modular Wood Construction In High Wind And Seismic Areas 150 Mph Exposure C Wind Zone Seismic Design Category D₂*. Developed in response to the 2010 earthquake in Haiti, 2010 (in production).

FEMA Safe Room and Community Shelters Case Studies—

Community Wind Shelter: Background and Research, 2002; *Innovative Floodplain Management: Kinston, North Carolina*, 2002; *Protecting School Children from Tornadoes: Kansas School Shelter Initiative*, 2002; *Residential Safe Rooms: Background and Research*, 2003; *Safe Rooms Save Lives: Oklahoma Safe Room Initiative*, 2003; *Hardened First Responder Facility, Smith County, Texas*, 2003; *Clara Barton Hospital Shelter, Hoisington, Kansas*, 2004; *A Safe Haven for Campers: Iowa State Fair Campground Shelter*, 2004; *Arkansas' Shelter Initiative for Residences and Schools*, 2005.



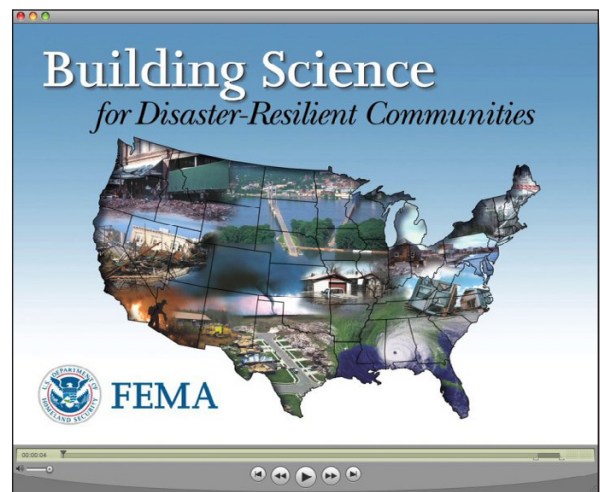
State and Local Floodplain Management Quick Guides— *Floodplain Management in Missouri: Local Officials Reference Manual*, 1999. *Floodplain Management Quick Guide* booklets developed for the states of Alaska, Alabama, Arkansas, California, Colorado, Georgia, Illinois, Kentucky, Michigan, Missouri, Mississippi, [North Carolina](#), New Mexico, Rhode Island, South Carolina, Texas, and Utah, 1999-2008.

Presentations

Aside from numerous PowerPoint presentations created in support of conference and training events, Ms. Rizer recently completed an Adobe Flash-based presentation for the FEMA Risk Assessment Building Science Branch, 2010.

View web streaming version:

<http://www.design4impact.com/BuildSciPres.html>.



Department of Homeland Security— *National Science and Technology Council Committee on Homeland and National Security (CHNS)*, 2008; *IGD Overview*, 2009; *DHS Stabilization of Buildings*, 2009; *IGD New Tools*, 2009; *Security, Energy, and Environment (SEE)*, 2009; *Rapid Visual Screening of Tunnels and Subway Stations*, 2009; *Bridge Vulnerability*, 2009; *A Proposed Framework for Prioritizing Critical Infrastructure*, 2009; *Physicality of Buildings: Building Safer Structures*, 2009; *International Academy of Astronautics Planetary Defense Conference*, 2009; *World Health Day: Pan American Health Organization*, 2009.

National Institute of Building Sciences— *National Institute of Building Sciences: An Authoritative Source of Innovative Solutions for the Built Environment*, 2009; *Building Enclosure Technology and Environmental Council (BETEC)*, 2009; *Principles of Integrated or Whole Building Design*, Security, Energy and Environmental Summit, 2009.

National Institute of Building Sciences /Department of Veterans Affairs— *Innovative 21st Century Building Environments for VA Health Care Delivery*; 2009; *VAFM Transformation Initiative: Enterprise Model Development*, 2009.



Large Format Display—

FEMA National Safe Room Exhibit, National Emergency Training Center, Emergency Management Institute— Create and design display graphics for the Safe Room Exhibit located at Emmitsburg, MD campus, 2000, 2008.

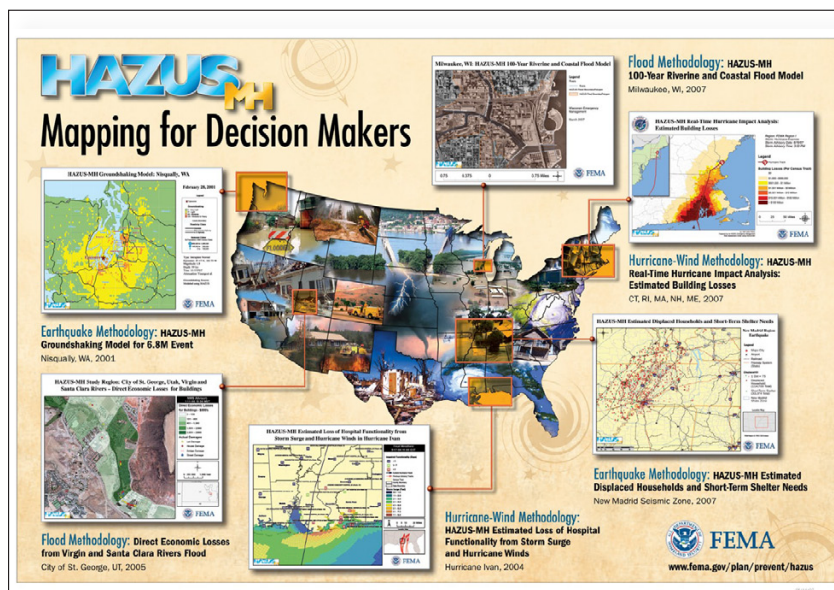
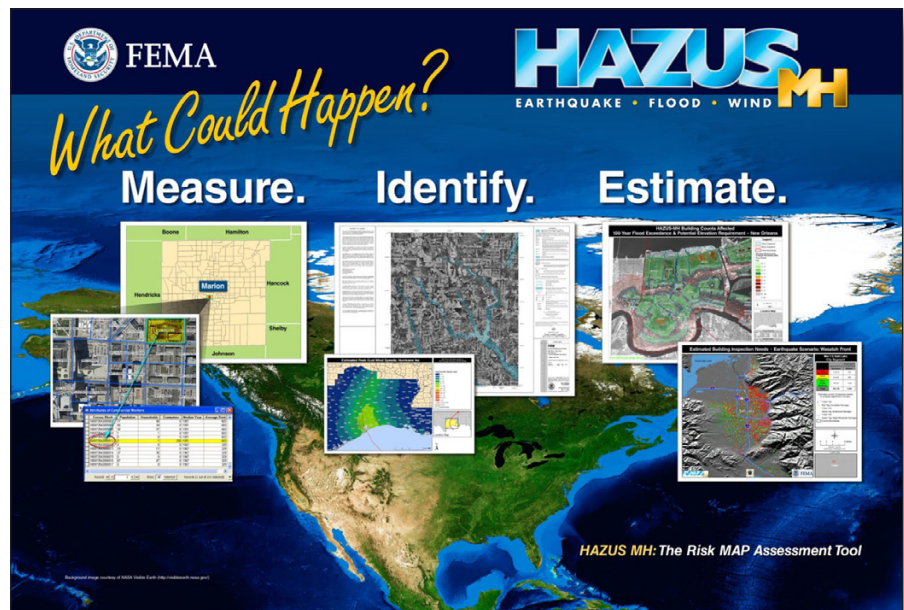


Exhibit Posters— National Tornado Forum Press Conference, 2000; *FEMA ESRI Map Gallery*, 2004-2010; FEMA World Trade Center Report, 2005; FEMA 528: *Earthquake Home Hazard Hunt* poster, 2005; FEMA *Integrated Mapping for Decision Makers*, 2005-2007; Greenhome & O'Mara, Inc., Areas of Expertise, 2005-2007; FEMA HAZUS-MH Application Template Maps, 2005-2008; FEMA Mitigation Works, 2008; FEMA Tornado Impact Poster, 2009; FEMA Building Science Banner, 2010.

Conference Trade Show Displays— World Trade Center Report 2003; ASFPM Foundation, 2004; MAT Program, Map Modernization, National Hurricane Program, 2004; FEMA Tornado Safe Room Banner, 2005; Greenhorne & O’Mara, Inc., ASFPM Conference, 2006; FEMA Mitigation Assessment Team, 2005, 2007; HAZUS-MH: The Risk Map Assessment Tool, 2009; FEMA Building Science, 2010.

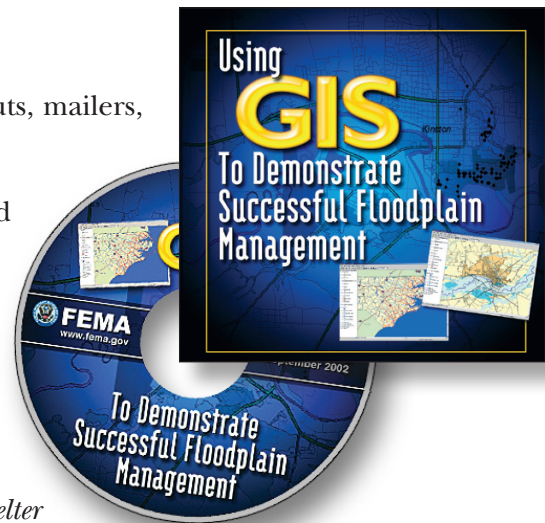


Outreach Materials

In addition to the above, outreach materials include handouts, mailers, postcards, trifolds, and other collateral materials.

Brochures— *eMedicaid*, Maryland Department of Health and Mental Welfare, 2003; *FEMA Risk Management Series*, 2004; FEMA L-231: *Reduce Your Risk From Natural Disasters*, 2005; FEMA L-233: *Taking Shelter From the Storm*, 2005; *Reducing Flood Losses Through the International Codes®: Meeting the Requirements of the National Flood Insurance Program*, FEMA and ICC, 2005; *eTelemetry Product and Case Studies*, 2006.

Interactive CDs— FEMA 388 CD: *Safe Room and Community Shelter Resource CD*, 2001; FEMA 403 CD: *World Trade Center Building Performance Study*, 2002; FEMA 416 CD: *Using GIS to Demonstrate Successful Floodplain Management*, 2002; FEMA 479 CD: *Developing and Promoting Mitigation Best Practices and Case Studies Community Strategy Toolkit*, 2004; FEMA 372 CD, Edition 2: *Mitigation Resources for Success*; FEMA 74 CD: *Earthquake Hazard Mitigation for Nonstructural Elements*, 2005; FEMA 154 CD: *Rapid Visual Screening of Buildings for Potential Seismic Hazards*, 2005; *FEMA 2005 NEHRP Publications*, 2006; Interactive CDs are created as part of all FEMA MAT publication deliverables.





haul project, 2008; eTelemetry– eTelemetry is an IT start-up with several patents on products that create business intelligence passively from network traffic. Provided re-branding and web-related graphics, 2006; Coordinate with FEMA web services personnel to provide web design and graphics for the FEMA MAT, HAZUS-MH, RMS publications, and Safe Room and Community Shelter web pages, 1998-2010 .

Postcards– FEMA L248: *FEMA Building Disaster Resilient Communities*, 2005; *Introducing Locate 3.2*, eTelemetry/Force3, 2006; SmartVent: *Learn How to Design and Construct Code-Compliant, Flood Sustainable Homes*, 2007; HAZUS-MH 4th Annual HAZUS Users Conference, 2009

Website Design Guidance– Disaster Assistance Improvement Project (DAIP)– Web design, logo development, re-branding, and design guidance for new Federal web-based disaster assistance portal, 2009; USACE, New Orleans District– Web design, re-branding, and design guidance for web over-

DisasterAssistance.gov
ACCESS TO DISASTER HELP AND RESOURCES

